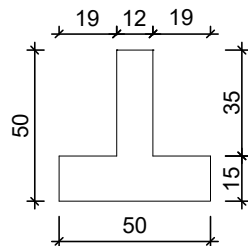


PLANTA DE FORMA - SAPATA CORRIDA

Esc. 1/50





CORTE - SAPATA CORRIDA

Sem Esc.

CONCRETO $F_{ck} = 25\text{MPa}$
 AÇO - CONFORME PRANCHA DE ARMADURA
 LASTRO DE CONCRETO MAGRO - ESP = 3CM
 SOLO FORTEMENTE COMPACTADO
 TAXA ADMISSÍVEL $\geq 0,75\text{kgf/cm}^2$, 95% DO PN

NOTAS:

- PARA LOCAÇÃO DA OBRA NO TERRENO, CONSULTAR PROJETO DE IMPLANTAÇÃO
- PARA LOCAÇÃO DE PAREDES, CONSULTAR PROJETO ARQUITETÔNICO (PRANCHA 05)

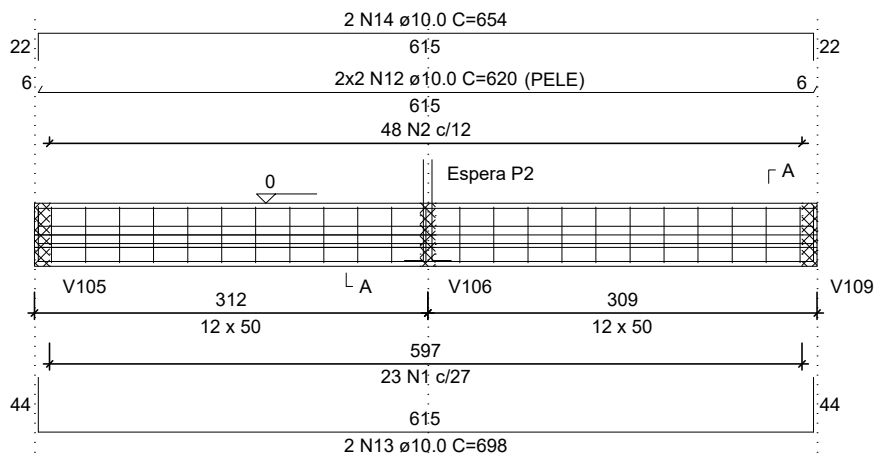
TÍTULO: PROJ. ESTRUTURAL	CONTEÚDO: PLANTA DE FORMA - SAPATA CORRIDA	ASSUNTO: UNIDADE HABITACIONAL PNHR	PRANCHA: 01/07
AUTOR DO PROJETO: MARCEL THEODORO BARCELOS CREA/MS 70412/D	ÓRGÃO EMISSOR: PREFEITURA MUNICIPAL DE SIDROLÂNDIA CNPJ 03.501.574/0001-31	ÁREA: 50,70m ²	ESC.: Indicada
		DATA: AGO./2025	
			



TÍTULO: PROJ. ESTRUTURAL	CONTEÚDO: PLANTA DE FORMA - BALDRAME	ASSUNTO: UNIDADE HABITACIONAL PNHR		PRANCHA: 02/07
AUTOR DO PROJETO: 				

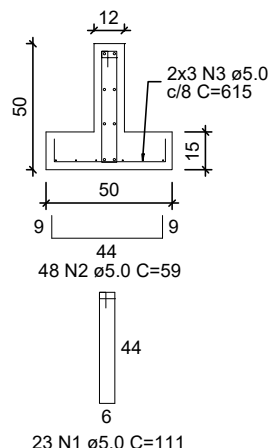
V100

ESC 1:50



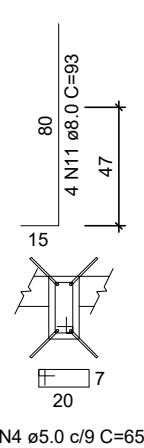
SEÇÃO A-A

ESC 1:25



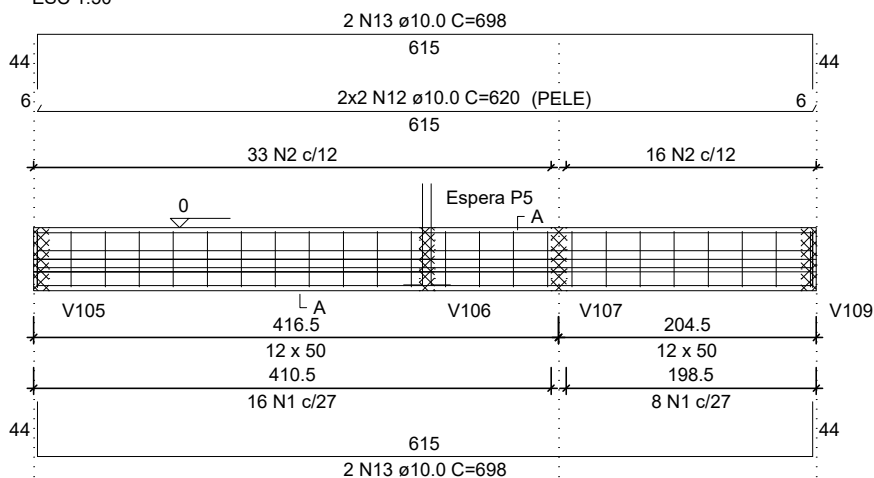
ESPERA P2

ESC 1:25



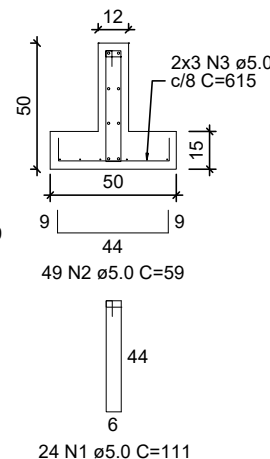
V101

ESC 1:50



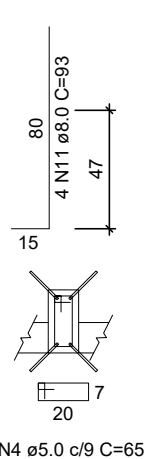
SEÇÃO A-A

ESC 1:25



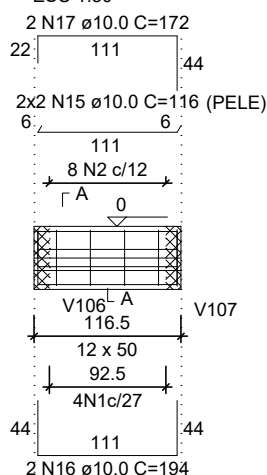
ESPERA P5

ESC 1:25



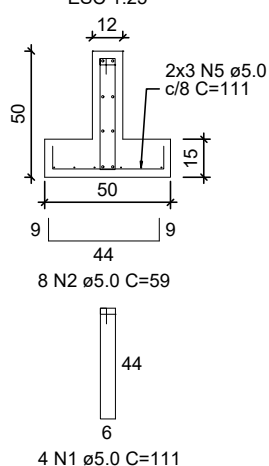
V102

ESC 1:50



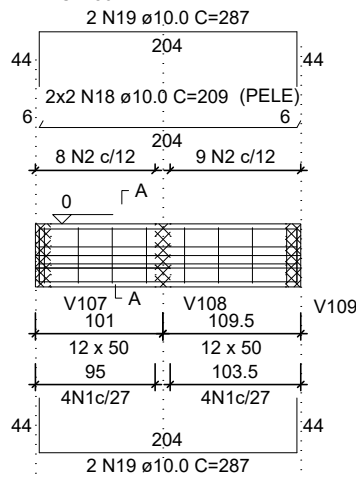
SEÇÃO A-A

ESC 1:25



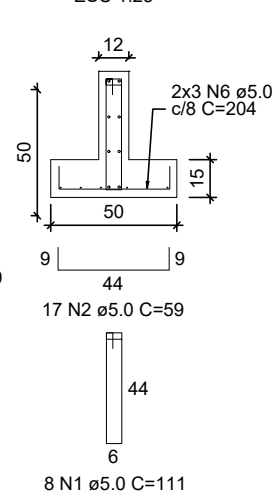
V103

ESC 1:50



SEÇÃO A-A

ESC 1:25



TÍTULO:

PROJ. ESTRUTURAL

CONTEÚDO:

DETALHE ARMADURA - SAPATA CORRIDA

ASSUNTO:

UNIDADE HABITACIONAL
PNHR

PRANCHA:

03/07

AUTOR DO PROJETO:

MARCEL THEODORO BARCELOS
CREA/MS 70412/D

ÓRGÃO EMISSOR:

PREFEITURA MUNICIPAL DE SIDROLÂNDIA
CNPJ 03.501.574/0001-31

ÁREA:

50,70m²

ESC.:

Indicada

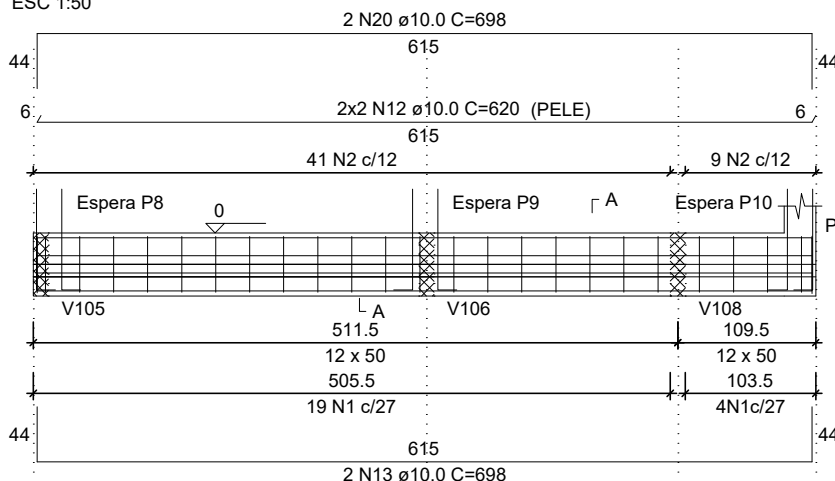
DATA:

AGO./2025



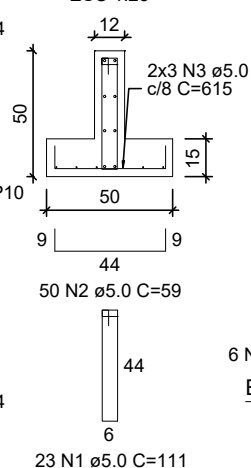
V104

ESC 1:50



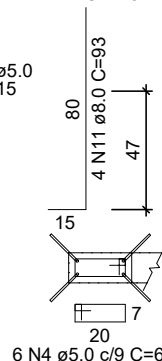
SEÇÃO A-A

ESC 1:25



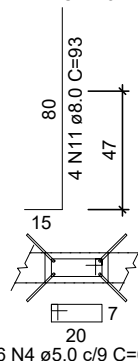
ESPERA P8

ESC 1:25



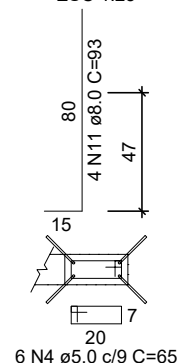
ESPERA P9

ESC 1:25



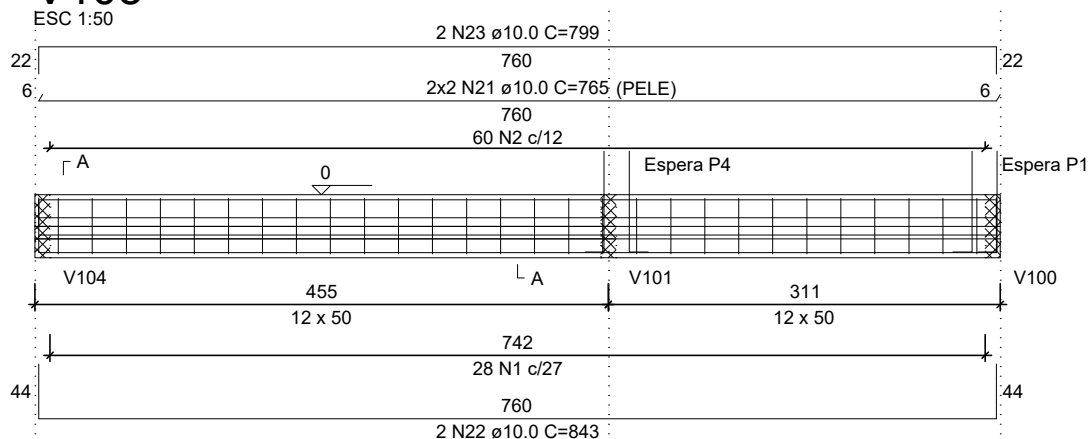
ESPERA P10

ESC 1:25



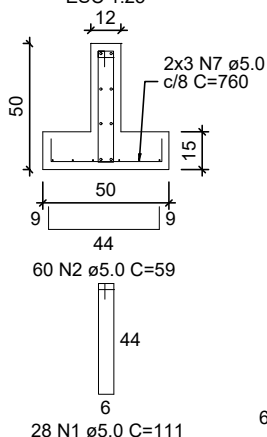
V105

ESC 1:50



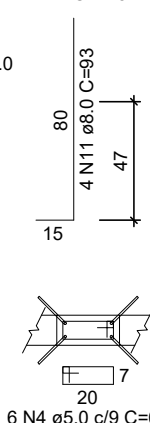
SEÇÃO A-A

ESC 1:25



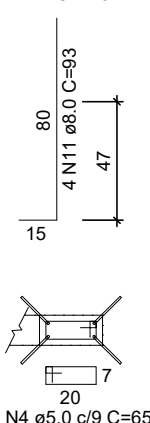
ESPERA P4

ESC 1:25



ESPERA P1

ESC 1:25



TÍTULO:

PROJ. ESTRUTURAL

CONTEÚDO:

DETALHE ARMADURA - SAPATA CORRIDA

ASSUNTO:

UNIDADE HABITACIONAL
PNHR

PRANCHA:

04/07

AUTOR DO PROJETO:

MARCEL THEODORO BARCELOS
CREA/MS 70412/D

ÓRGÃO EMISSOR:

PREFEITURA MUNICIPAL DE SIDROLÂNDIA
CNPJ 03.501.574/0001-31

ÁREA:

50,70m²

ESC.:

Indicada

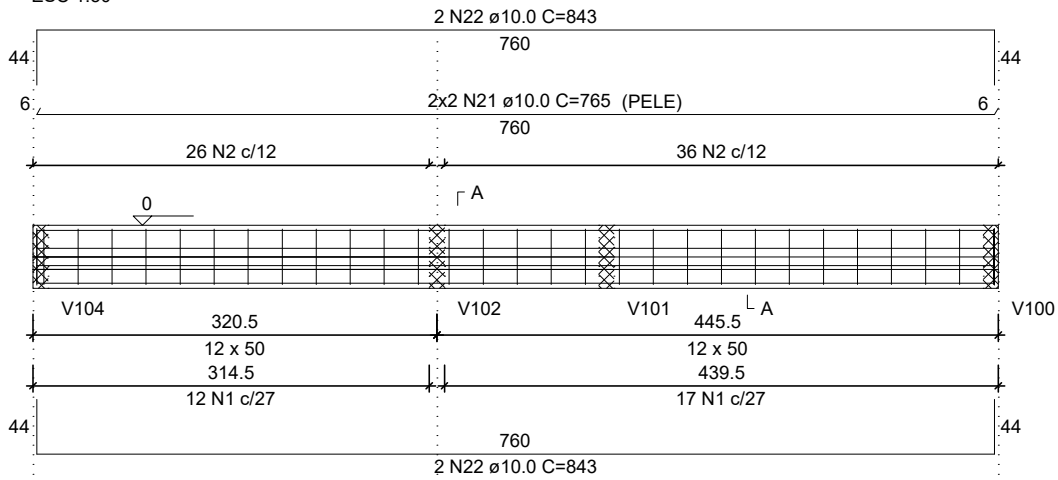
DATA:

AGO./2025



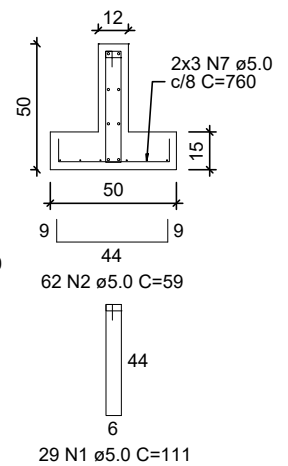
V106

ESC 1:50



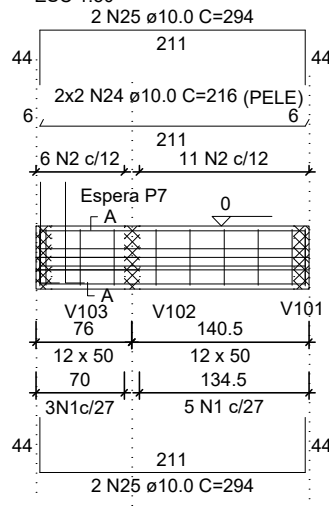
SEÇÃO A-A

ESC 1:25



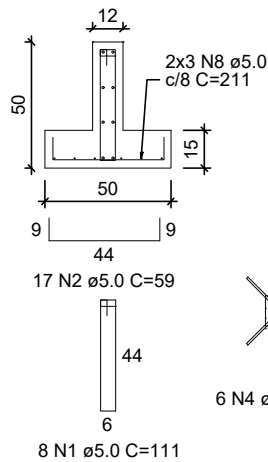
V107

ESC 1:50



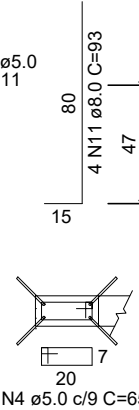
SEÇÃO A-A

ESC 1:25



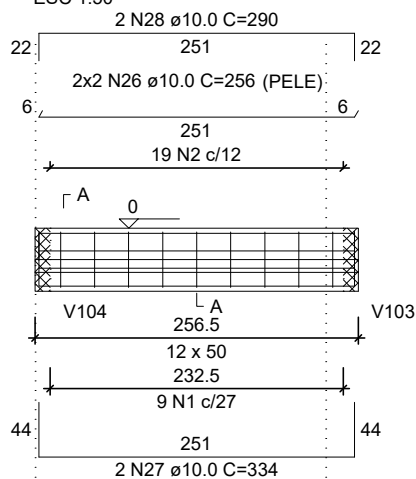
ESPERA P7

ESC 1:25



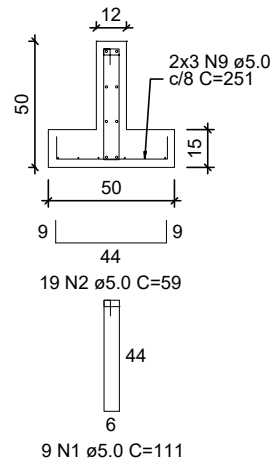
V108

ESC 1:50



SEÇÃO A-A

ESC 1:25



TÍTULO:

PROJ. ESTRUTURAL

CONTEÚDO:

DETALHE ARMADURA - SAPATA CORRIDA

ASSUNTO:

UNIDADE HABITACIONAL
PNHR

PRANCHA:

05/07

AUTOR DO PROJETO:

MARCEL THEODORO BARCELOS
CREA/MS 70412/D

ÓRGÃO EMISSOR:

PREFEITURA MUNICIPAL DE SIDROLÂNDIA
CNPJ 03.501.574/0001-31

ÁREA:

50,70m²

ESC.:

Indicada

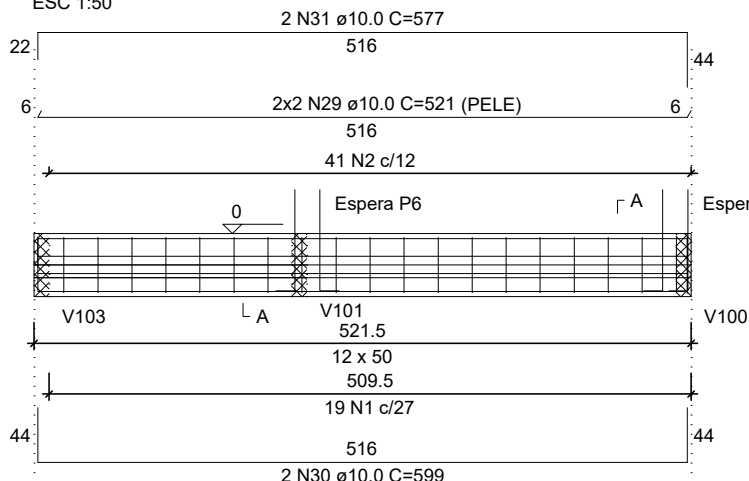
DATA:

AGO./2025



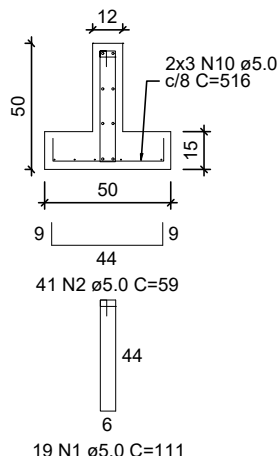
V109

ESC 1:50



SEÇÃO A-A

ESC 1:25



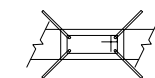
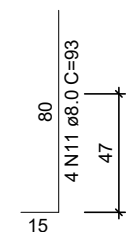
ESPERA P6

ESC 1:25

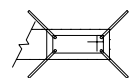


ESPERA P3

ESC 1:25



6 N4 ø5.0 c/9 C=65



6 N4 ø5.0 c/9 C=65

RELAÇÃO DO AÇO

V100	V101	V102
V103	V104	V105
V106	V107	V108
V109		

RESUMO DO AÇO

AÇO	N	DIAM (mm)	QUANT	C.UNIT (cm)	C.TOTAL (cm)
CA60	1	5.0	175	111	19425
	2	5.0	371	59	21889
	3	5.0	18	615	11070
	4	5.0	60	65	3900
	5	5.0	6	111	666
	6	5.0	6	204	1224
	7	5.0	12	760	9120
	8	5.0	6	211	1266
	9	5.0	6	251	1506
	10	5.0	6	516	3096
CA50	11	8.0	40	93	3720
	12	10.0	12	620	7440
	13	10.0	8	698	5584
	14	10.0	2	654	1308
	15	10.0	4	116	464
	16	10.0	2	194	388
	17	10.0	2	172	344
	18	10.0	4	209	836
	19	10.0	4	287	1148
	20	10.0	2	698	1396
	21	10.0	8	765	6120
	22	10.0	6	843	5058
	23	10.0	2	799	1598
	24	10.0	4	216	864
	25	10.0	4	294	1176
	26	10.0	4	256	1024
	27	10.0	2	334	668
	28	10.0	2	290	580
	29	10.0	4	521	2084
	30	10.0	2	599	1198
	31	10.0	2	577	1154

AÇO	DIAM (mm)	C.TOTAL (m)	QUANT + 10% (Barras)
CA50	8.0	37.2	4
CA60	10.0	404.3	38
CA60	5.0	731.6	68
PESO TOTAL (kg)			
CA50	290.4		
CA60	124		

TÍTULO:

PROJ. ESTRUTURAL

CONTEÚDO:

DETALHE ARMADURA - SAPATA CORRIDA

ASSUNTO:

UNIDADE HABITACIONAL
PNHR

PRANCHA:

06/07

AUTOR DO PROJETO:

MARCEL THEODORO BARCELOS
CREA/MS 70412/D

ÓRGÃO EMISSOR:

PREFEITURA MUNICIPAL DE SIDROLÂNDIA
CNPJ 03.501.574/0001-31

ÁREA:

50,70m²

ESC.:

Indicada

DATA:

AGO./2025





DETALHE ARMADURA
Esc. 1/50